

Kleuren / Farben / colors:

H = Humbrol

R = Revell

***** = a lot

* = a little

WH - White

• H34 / R5

BK - Black

• H33 / R8

NW - Natural wood

• H110 / R86

LNW - Light natural wood

• H110**+H24* / R86**+R15*

RB - Red-brown

• H100 / R15* + R36**

BE - Beige

• H63**+103** / R16

• Voor uitvoering met vol

zeil zie www.artitec.nl

• Für Ausführung mit

Segeln, sehen Sie

www.artitec.nl

• For version with full sails

go to www.artitec.nl

• Lijm resin en metalen

onderdelen met seconde-

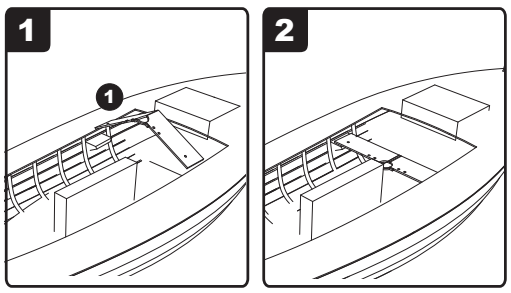
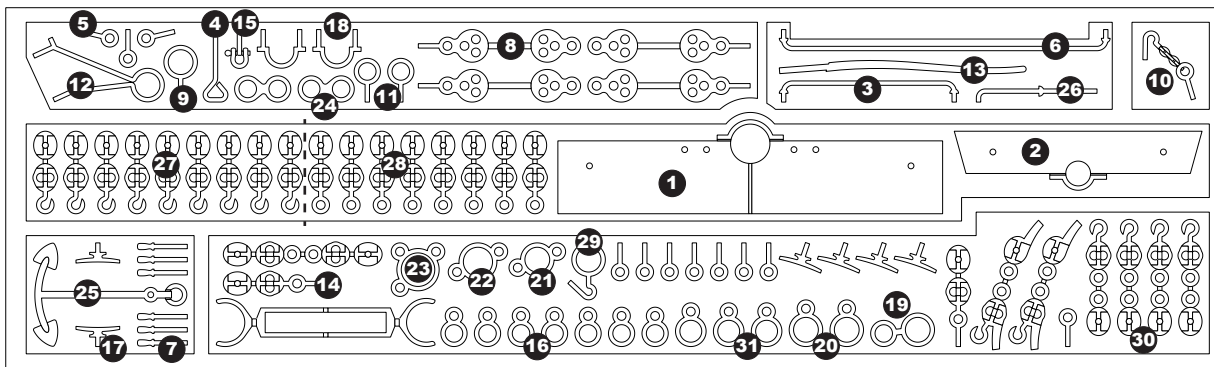
lijm (cyanoacrylaat).

• Zum verkleben verwenden

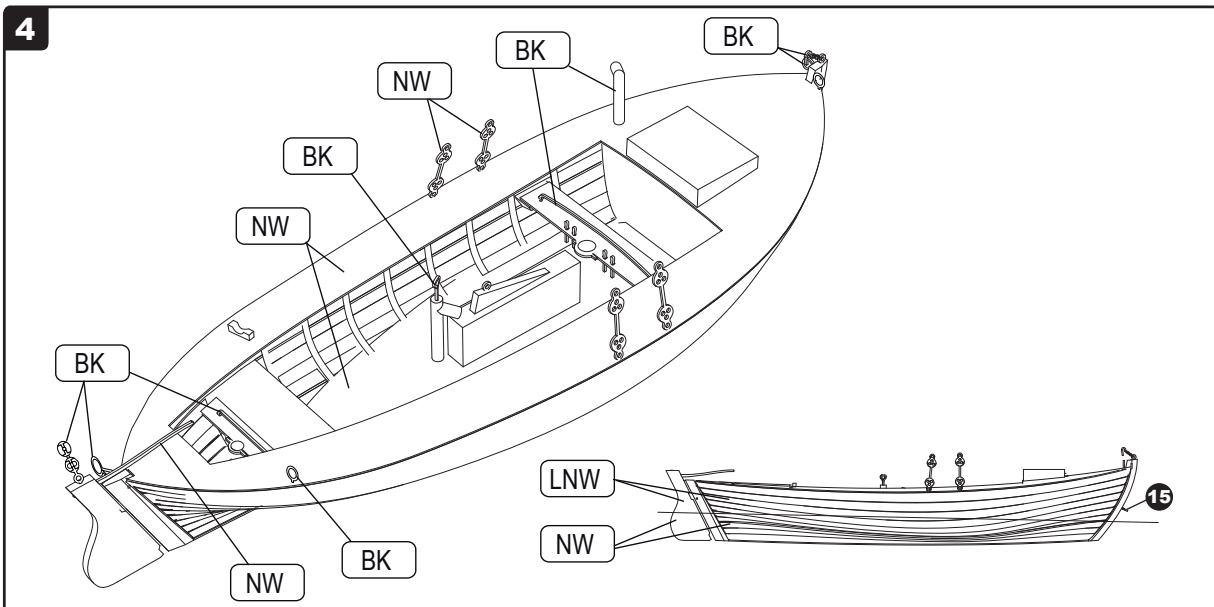
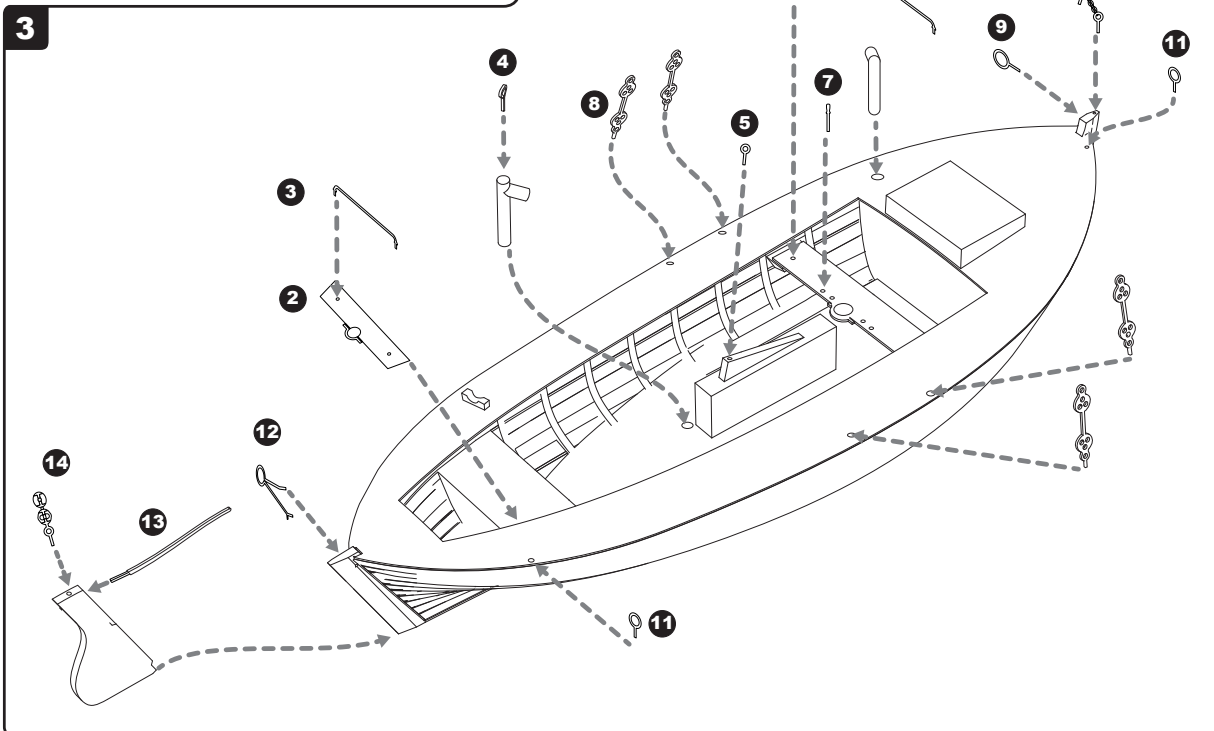
Sie Cyanoacrylate.

• Glue resin and brass

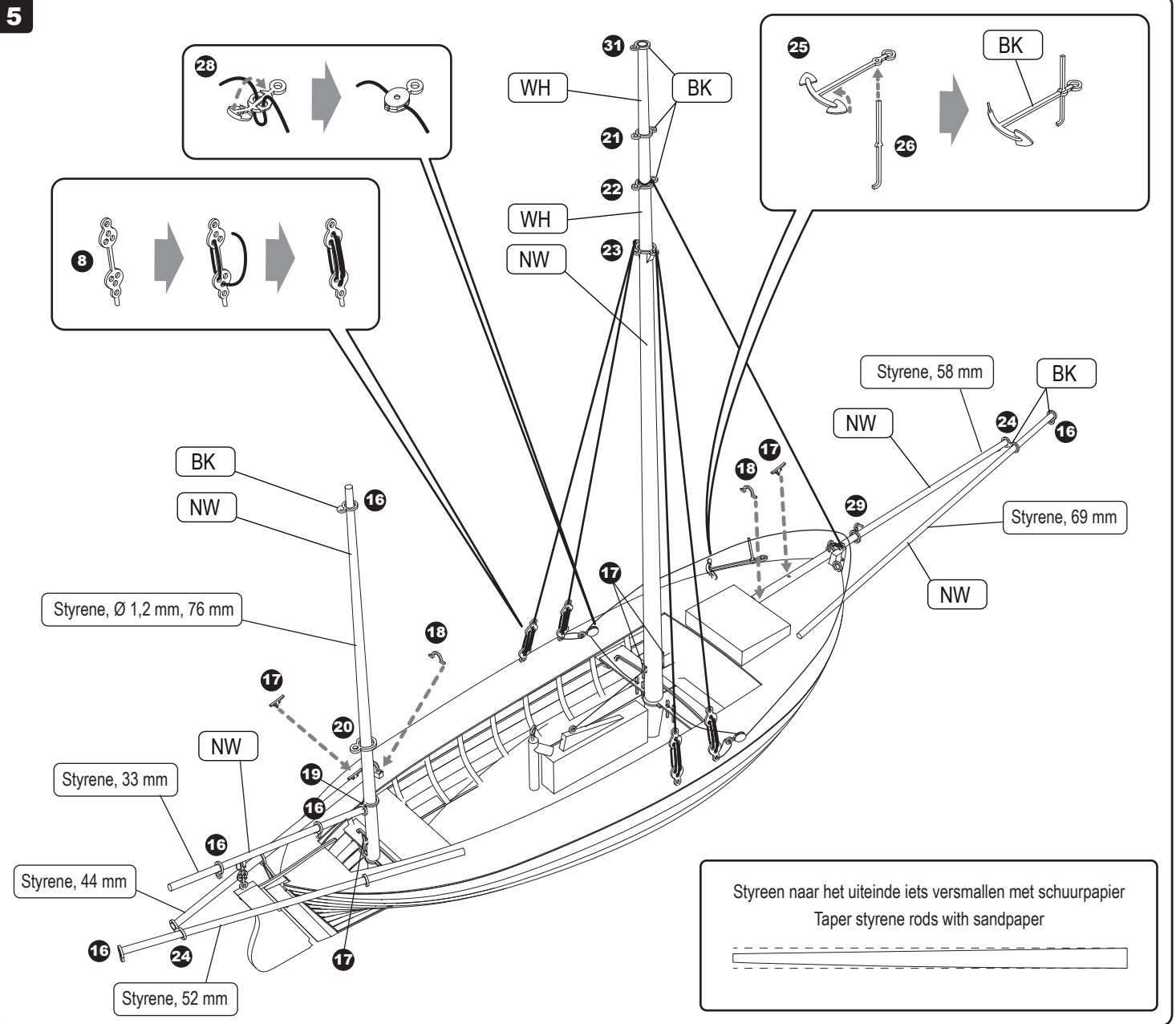
parts with Cyanoacrylate.



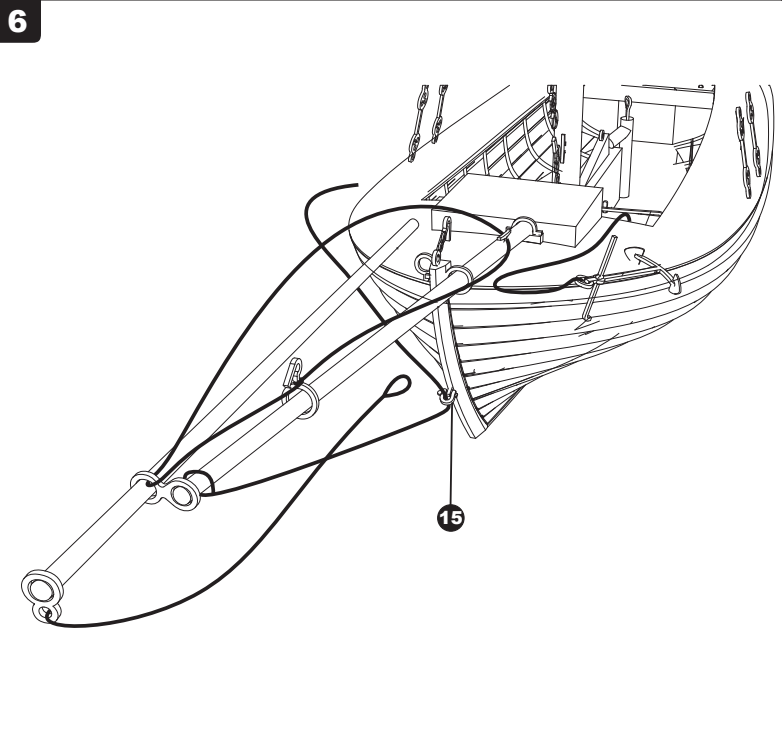
Boor alle gaatjes voor met 0,4 mm
Drill all holes for etching whit 0,4 mm $\varnothing 0,4\text{mm}$



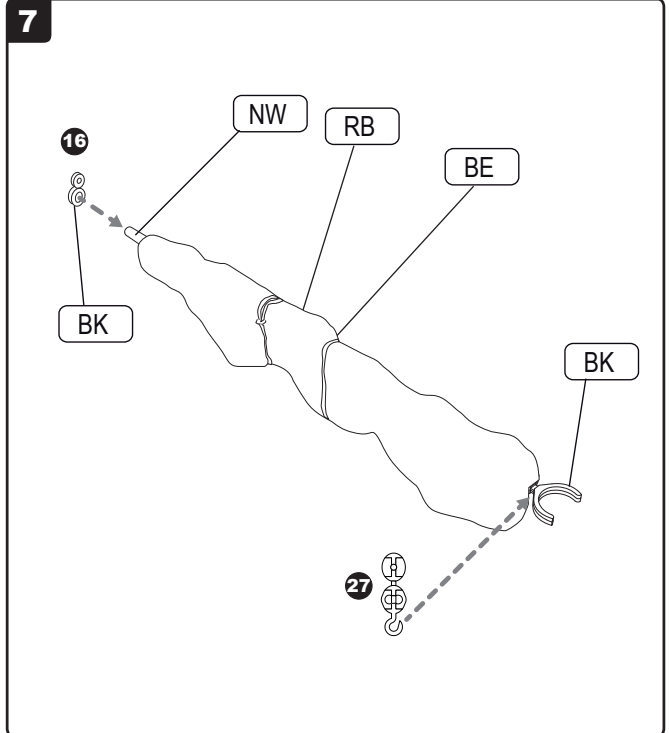
5



6



7



8

